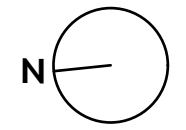
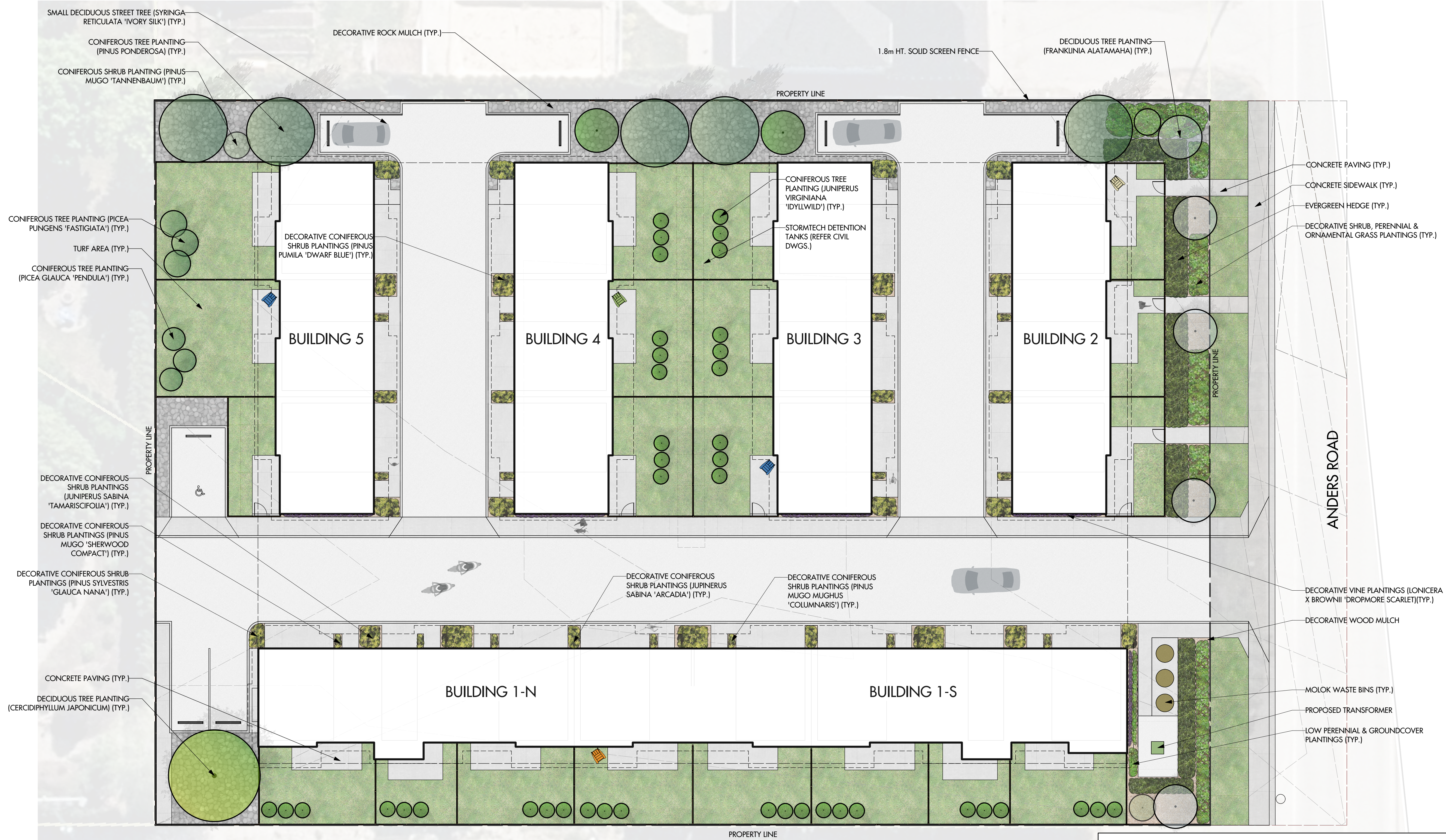


0 5 10 15 20 25 M



OUTLAND DESIGN
LANDSCAPE ARCHITECTURE

303-590 KLO Road
Kelowna, BC V1Y 7S2
T (250) 868-9270
www.outlanddesign.ca



PROJECT TITLE

852 ANDERS ROAD

West Kelowna, BC

DRAWING TITLE

**CONCEPTUAL
LANDSCAPE PLAN**

ISSUED FOR / REVISION

1	21.05.05	Review
2	21.05.26	Review
3	21.06.01	Review
4	21.11.22	Review
5		

PROJECT NO

21-054

DESIGN BY

FB/AM

DRAWN BY

MC

CHECKED BY

FB

DATE

NOV. 22, 2021

SCALE

1:150

PAGE SIZE

24"x36"

SEAL



DRAWING NUMBER

L1/1

ISSUED FOR REVIEW ONLY

Copyright Reserved. This drawing is the property of Outland Design Landscape Architecture (limited) and shall not be reproduced, resold, or tendered without permission.



PRECEDENT PICTURES OF VINES GROWING ON BUILDING

NOTES

1. PLANT MATERIAL AND CONSTRUCTION METHODS SHALL MEET OR EXCEED THE CANADIAN LANDSCAPE STANDARD.
2. ALL SOFT LANDSCAPE AREAS SHALL BE WATERED BY A FULLY AUTOMATIC TIMED UNDERGROUND IRRIGATION SYSTEM.
3. TREE AND SHRUB BEDS TO BE DRESSED IN A MINIMUM 75mm WOOD MULCH, AS SHOWN IN PLANS. DO NOT PLACE WEED MAT UNDERNEATH TREE AND SHRUB BEDS.
4. TREE AND SHRUB BEDS TO RECEIVE A MINIMUM 300mm DEPTH TOPSOIL PLACEMENT.
5. TURF AREAS FROM SOD SHALL BE NO. 1 GRADE GROWN FROM CERTIFIED SEED OF IMPROVED CULTIVARS REGISTERED FOR SALE IN B.C. AND SHALL BE TOLERANT OF DROUGHT CONDITIONS. A MINIMUM OF 150mm DEPTH OF GROWING MEDIUM IS REQUIRED BENEATH TURF AREAS. TURF AREAS SHALL MEET EXISTING GRADES AND HARD SURFACES FLUSH.
6. SITE GRADING AND DRAINAGE WILL ENSURE THAT ALL STRUCTURES HAVE POSITIVE DRAINAGE AND THAT NO WATER OR LOOSE IMPEDIMENTS WILL BE DISCHARGED FROM THE LOT ONTO ADJACENT PUBLIC, COMMON, OR PRIVATE PROPERTIES.

PLANT LIST

BOTANICAL NAME	COMMON NAME	QTY	SIZE/SPACING & REMARKS
TREES			
CERCIDIPHYLLUM JAPONICUM	KATSURA TREE	1	6cm CAL.
FRANKLINIA ALATAMAHIA	FRANKLIN TREE	5	6cm CAL.
JUNIPERUS VIRGINIANA 'IDYLLWILD'	IDYLLWILD JUNIPER	36	2.0m HT.
PICEA GLAUCA 'PENDULA'	WEeping WHITE SPRUCE	3	6cm CAL.
PICEA PUNGENS 'FASTIGIATA'	COLUMNAR BLUE SPRUCE	3	2.0m HT.
PINUS PONDEROSA	PONDEROSA PINE	5	2.0m HT.
SYRINGA RETICULATA 'IVORY SILK'	IVORY SILK LILAC	4	6cm CAL.
SHRUBS			
JUNIPERUS SABINA 'ARCADIA'	ARCADIA JUNIPER	10	#02 CONT. /1.8M O.C. SPACING
JUNIPERUS SABINA 'TAMARISCIFOLIA'	TAM JUNIPER	5	#02 CONT. /2.7M O.C. SPACING
PINUS MUGO MUGHUS 'COLUMNARIS'	COLUMNAR MUGO PINE	2	#02 CONT. /1.2M O.C. SPACING
PINUS MUGO 'SHERWOOD COMPACT'	SHERWOOD COMPACT MUGO PINE	9	#02 CONT. /1.2M O.C. SPACING
PINUS MUGO 'TANNENBAUM'	MUGO PINE	7	#02 CONT. /1.2M O.C. SPACING
PINUS PUMILA 'DWARF BLUE'	DWARF SIBERIAN PINE	4	#02 CONT. /2.1M O.C. SPACING
PINUS SYLVESTRIS 'GLAUCA NANA'	SCOTCH PINE	10	#02 CONT. /2.4M O.C. SPACING
PERENNIALS, GRASSES & GROUNDCOVERS			
ARCTOSTAPHYLOS UVA-URSI	KINNIKINNICK	44	#01 CONT. /0.75M O.C. SPACING
VINES			
LONICERA X BROWNII 'DROPMORE SCARLET'	DROPMORE SCARLET HONEYSUCKLE	10	